

WHS Autochartist



WH SELFINVEST
Est. 1998
Luxemburg, France, Belgium,
Poland, Germany, Netherlands

Copyright 2007-2011: all rights attached to this guide are the sole property of WH SelfInvest S.A. Reproduction and/or transmission of this guide by whatever means is not allowed without the explicit permission of WH SelfInvest. Disclaimer: this guide is purely informational in nature and can in no way be construed as a suggestion or proposal to invest in the financial instruments mentioned. Persons who do decide to invest in these financial instruments acknowledge they do so solely based on their own decision and risks. All information contained in this guide comes from sources considered reliable. The accuracy of the information, however, is not guaranteed.

How to activate Autochartist

Global overview

Basic search

Advanced search

Trade opportunities

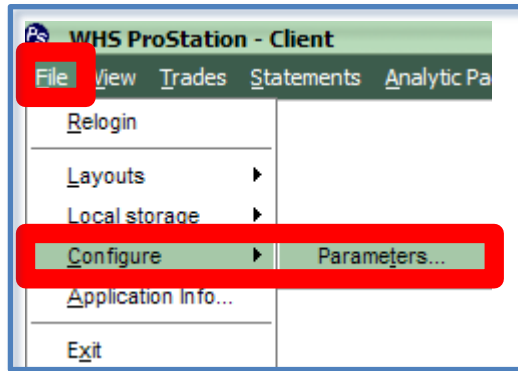
Daily news

User manuals

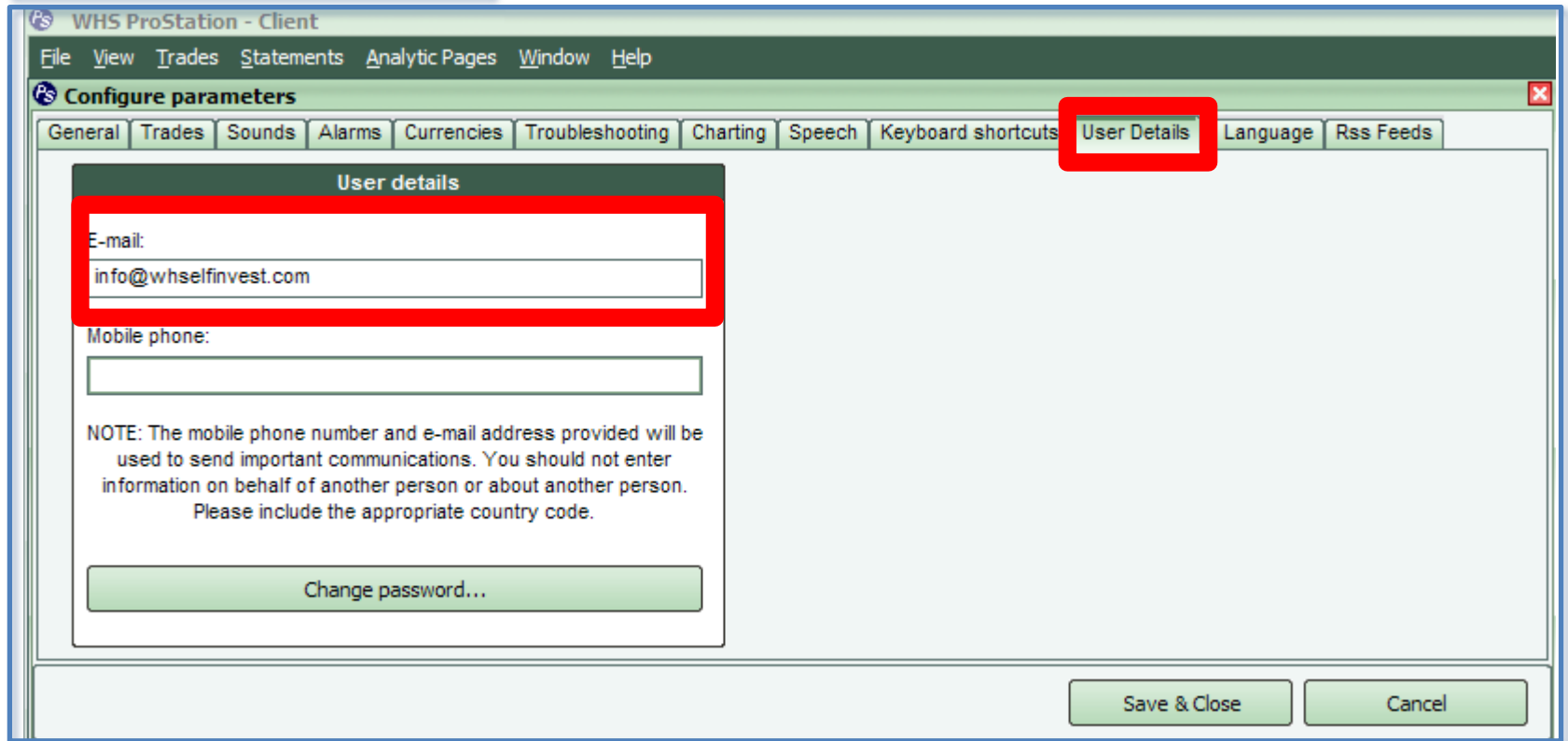
Trade Ideas

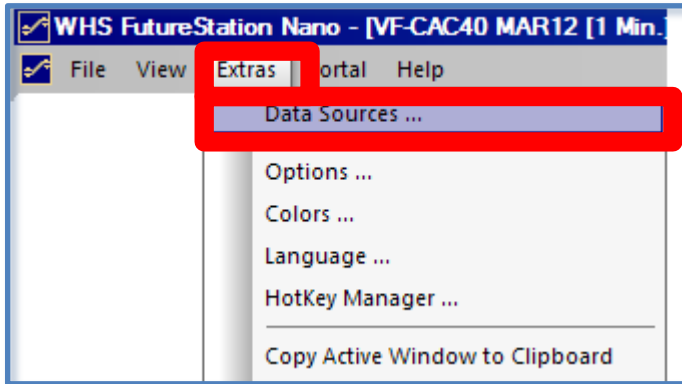
Chart patterns

Disclaimer

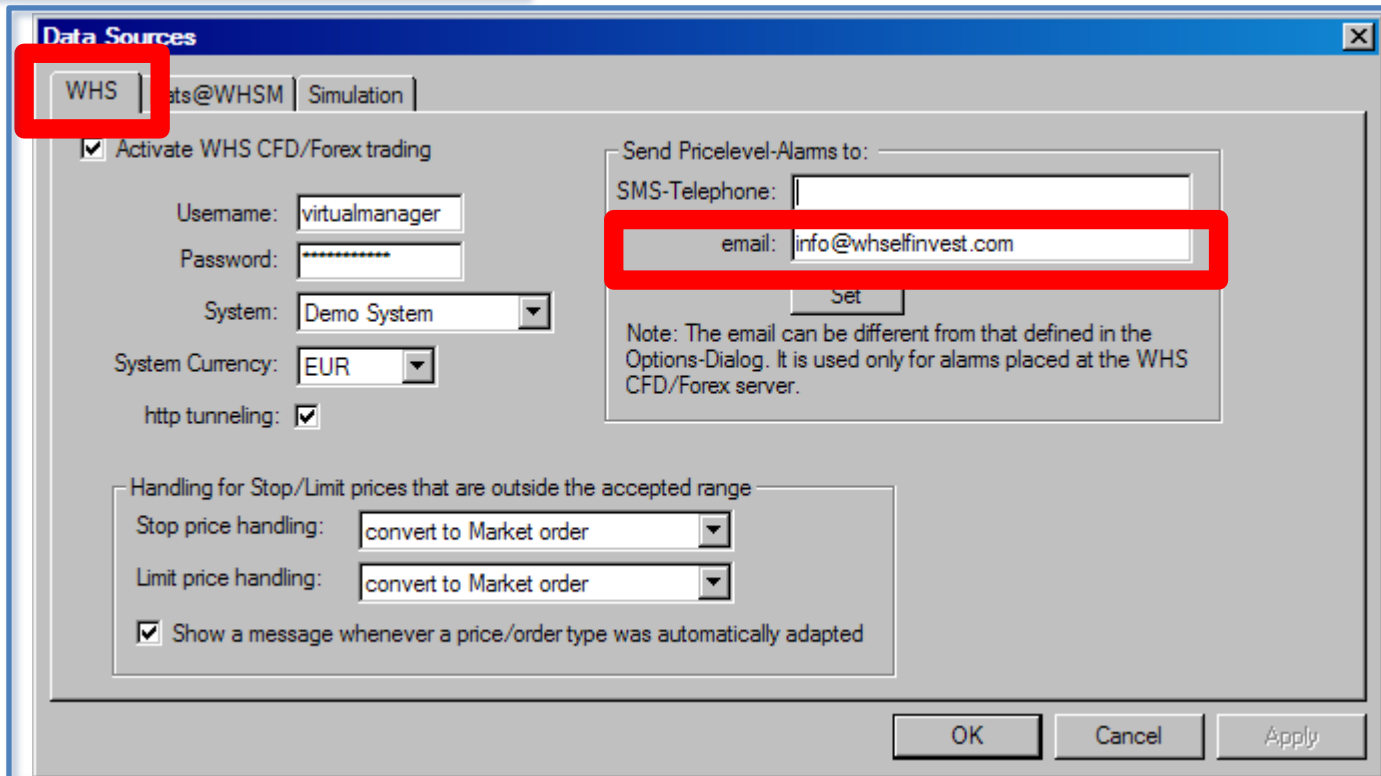


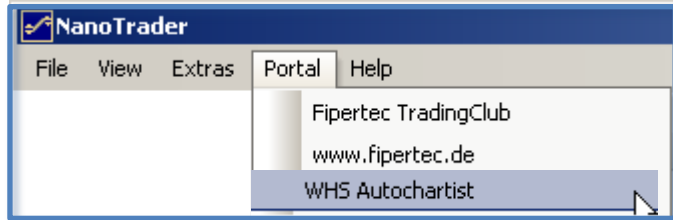
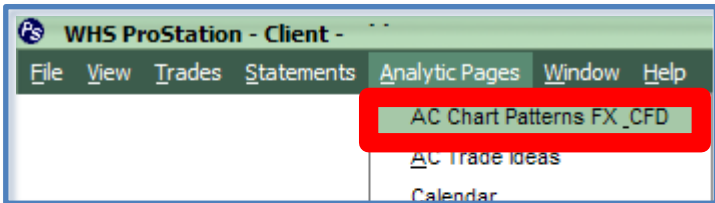
In order to activate the Autochartist on your WHSProstation, first go to FILE where you choose Configure and Parameters... The configure window opens with several tabs available, go to User Details. Please enter a valid email address to add Autochartist to your account.





In order to activate the Autochartist on your WHSFutureStation, first go to Extras where you choose Data Sources ... The Data Sources window opens with several tabs available, go to WHS. Please enter a valid email address to add Autochartist to your account.





Searches New Search

- Amsterdam Exchange (All Intraday)
- Commodities (All Intraday)
- Commodities (End-Of-Day)
- FOREX (All Intraday)**
- New York Stock Exchange (All Intraday)
- Stock Indices (All Intraday)

Alert sound On Off

Daily News

Research

Daily Commodities Update: Cocoa
 28 of February, 2012 12:00 GMT

Daily Indices Update: Germany 30 (DE30)
 28 of February, 2012 12:00 GMT

Daily Forex Update: EUR/NZD
 28 of February, 2012 12:00 GMT

Downloads

- User Manual
- MT4 Plugin
- Performance Statistics



Trading opportunities: FOREX (All Intraday)

- Chart Patterns
- Completed (39)
- Emerging (46)
- Fibonacci Patterns
- Completed (10)
- Emerging (48)
- Key Levels
- Breakouts (45)
- Approaches (40)

[Results Filter](#) ^

Active Trading Opportunities (228)		Expired Trading Opportunities (33)	
FOREX	GBP/NZD	▲ 15 Min	Triangle
FOREX	EUR/THB	▲ 15 Min	Resistance
FOREX	CHF/CZK	▲ 15 Min	Resistance
FOREX	NZD/CZK	▲ 15 Min	Resistance
FOREX	MXN/JPY	▲ 15 Min	Support
FOREX	CHF/HUF	▲ 15 Min	Resistance
FOREX	CZK/JPY	▲ 15 Min	Support
FOREX	CHF/HUF	▲ 15 Min	Resistance
FOREX	NZD/CZK	▲ 15 Min	Resistance
FOREX	CHF/HUF	▲ 15 Min	Resistance
FOREX	DKK/THB	▲ 15 Min	Support
FOREX	CHF/HUF	▲ 15 Min	Resistance
FOREX	EUR/HKD	▲ 15 Min	Support
FOREX	USD/DKK	▲ 15 Min	Resistance
FOREX	CZK/JPY	▲ 15 Min	Channel Up
FOREX	DKK/THB	▲ 15 Min	Support
FOREX	GBP/NOK	▲ 15 Min	Resistance
FOREX	USD/CAD	▲ 15 Min	Channel Down
FOREX	NZD/HUF	▲ 15 Min	Channel Down
FOREX	CHF/CZK	▲ 15 Min	Double Bottom
FOREX	CAD/CHF	▲ 15 Min	Resistance
FOREX	S&P/UKX	▲ 15 Min	Pisces Wedge

Searches New Search

- Amsterdam Exchange (All Intraday)
- Commodities (All Intraday)
- Commodities (End-Of-Day)
- FOREX (All Intraday)**
- New York Stock Exchange (All Intraday)
- Stock Indices (All Intraday)

Alert sound On Off

Choose either a group of instruments or specific symbol to make the basic search for. Give your search command a name so it can easily be retrieved from the list of searches afterwards.

Basic Search

How to use basic search
To create a basic search, please provide a search name and select search type. Use a the group search type to select all symbols in a group or use the symbol search type to search for individual symbols.

Search Type

Group Amsterdam Exchange (All Intraday)

Symbol Intraday Add

Search Name

Basic Search

How to use basic search
To create a basic search, please provide a search name and select a search type. Use a the group search type to select all symbols in a group or use the symbol search type to search for individual symbols.

Search Type

Group Amsterdam Exchange (All Intraday)

Symbol Intraday Add

Search Name

Click on the Create Search button to validate the query. Once submitted the Search will be added to your list of Searches and 'Home' section of the screen will be updated accordingly.

Searches New Search

- US30**
- Amsterdam Exchange (All Intraday)
- Commodities (All Intraday)
- Commodities (End-Of-Day)
- FOREX (All Intraday)
- New York Stock Exchange (All Intraday)
- Stock Indices (All Intraday)

Alert sound On Off

Home

ID: 8868101

Fibonacci Patterns

www.autochartist.com

13,041.5591
13,034.6591
13,024.6591
13,014.6591
13,004.6591
12,994.6591
12,984.6591
12,974.6591
12,964.6591
12,954.6591
12,944.6591
12,934.6591
12,924.6591
12,914.6591
12,904.6591
12,894.6591
12,884.6591

Key Levels

Symbol	.US30
Direction	▲
Interval	240 Min
Level Type	Resistance
Identified Time	02:27 19:00
Length	28 Candles
Significance	■■■■
Resistance Level	13041.0000

Price Movement View Analysis

Choose for the Advanced Search options and limit the search results by direction, trend change, minimum pattern length, indicators or patterns.

Searches
New Search

- Amsterdam Exchange (All Intraday) ✎ ✕
- Commodities (All Intraday) ✎ ✕
- Commodities (End-Of-Day) ✎ ✕
- FOREX (All Intraday) ✎ ✕
- New York Stock Exchange (All Intraday) ✎ ✕
- Stock Indices (All Intraday) ✎ ✕

Alert sound

On
Off

New Home Pattern Search

Chart Patterns Fibonacci Patterns Key Levels

Price Range

Minimum Price

Maximum Price

Direction

Bull
 Bear
 Bull & Bear

Trend Change

Minimum Pattern Length

0 40 80 120 160 200

Quality Indicators

Minimum Clarity
 0 2 4 6 8 10

Minimum Initial Trend
 0 2 4 6 8 10

Minimum Volume Increase (Not applicable to Forex)
 0 2 4 6 8 10

Patterns

Ascending Triangle

Descending Triangle

Triangle

Channel Down

Channel Up

Falling Wedge

Rising Wedge

Rectangle

Head and Shoulders

Inverse Head and Shoulders

New Home Pattern Search

Chart Patterns Fibonacci Patterns Key Levels

Price Range

Minimum Price

Maximum Price

Direction

Bull
 Bear
 Bull & Bear

Minimum Pattern Length

0 40 80 120 160 200

Quality Indicators

Minimum Clarity
 0 2 4 6 8 10

Minimum Time Symmetry
 0 2 4 6 8 10

Minimum Price Symmetry
 0 2 4 6 8 10

Minimum Overall Quality
 0 2 4 6 8 10

Patterns

3 Point Retracement

3 Point Extension

ABCD

Gartley

Butterfly

3 Drive

New Home Pattern Search

Chart Patterns Fibonacci Patterns Key Levels

Price Range

Minimum Price

Maximum Price

Minimum Pattern Length

0 40 80 120 160 200

Quality Indicators

3 Points
 4 Points
 5 Points
 6 Points
 7 Points
 8 Points
 9 Points
 10 Points

Patterns

Horizontal Resistance
 Horizontal Support

By clicking on the queries in the 'Search-window' the screen will automatically show any trade opportunities that are occurring and/or have a occurred in the recent past.

Searches New Search

- Amsterdam Exchange (All Intraday) ✖
- Commodities (All Intraday) ✖
- Commodities (End-Of-Day) ✖
- FOREX (All Intraday) ✖
- New York Stock Exchange (All Intraday) ✖
- Stock Indices (All Intraday) ✖

Alert sound On Off

Home
Chart Patterns
Fibonacci Patterns
Key Levels

ID: 39019486 www.autochartist.com

27/2 00:30 27/2 05:00 27/2 10:30 27/2 16:30 27/2 22:00 28/2 04:00

Symbol: .SILVER

Interval: 30 Min

Pattern: ABCD

Identified Time: 02:27 21:00

Length: 26 Candles

Direction: ▼

Quality:

Initial Trend:

Uniformity:

Clarity:

Target 0.382: 35.6079

Target 0.500: 35.5405

Target 0.618: 35.4731

Target 0.786: 35.3771

Target 1.000: 35.256

Target 1.272: 35.0997

Target 1.618: 34.9021

Price Movement View Analysis

Trading opportunities: Commodities (All Intraday)

Chart Patterns

Fibonacci Patterns

Key Levels

Completed (5)

Completed (0)

Breakouts (0)

Emerging (10)

Emerging (2)

Approaches (3)

[Results Filter](#) ⤴

Active Trading Opportunities (20) Expired Trading Opportunities (49)

Instrument	Symbol	Interval	Pattern	Time	Quality	Status	Candles
CFD	WTI	240 Min	ABCD	02-28 08:00		Emeraina	34
CFD	.GOLD	30 Min	Trianole	02-28 08:30		Completed	114
CFD	.GOLD	60 Min	Resistance	02-28 08:00		Approach	66
CFD	.SILVER	60 Min	Resistance	02-28 06:00		Approach	46
CFD	.GOLD	60 Min	Trianole	02-28 04:00		Emeraina	55
CFD	.GOLD	240 Min	Rising Wedge	02-27 08:00		Emeraina	254
CFD	BRENT	60 Min	Flao	02-28 02:00		Emeraina	21
CFD	.SILVER	30 Min	Resistance	02-28 05:00		Approach	85
CFD	BRENT	60 Min	Trianole	02-27 21:00		Completed	32
CFD	.GOLD	60 Min	Trianole	02-27 21:00		Emeraina	138
CFD	BRENT	240 Min	Channel Up	02-24 12:00		Emeraina	48
CFD	.SILVER	30 Min	Inverse Head and	02-27 22:00		Emeraina	47
CFD	.SILVER	30 Min	ABCD	02-27 22:00		Emeraina	26
CFD	BRENT	30 Min	Channel Up	02-27 20:30		Completed	60
CFD	BRENT	60 Min	Channel Up	02-27 08:00		Emeraina	220
CFD	BRENT	60 Min	Channel Up	02-27 08:00		Emeraina	188
CFD	BRENT	30 Min	Rising Wedge	02-27 08:30		Completed	163
CFD	BRENT	60 Min	Channel Up	02-24 11:00		Emeraina	201
CFD	BRENT	60 Min	Channel Up	02-24 11:00		Emeraina	169
CFD	.GOLD	240 Min	Trianole	02-10 08:00		Completed	185

Searches New Search

- .US30 ✖
- Amsterdam Exchange (All Intraday) ✖
- Commodities (End-Of-Day) ✖
- FOREX (All Intraday) ✖
- New York Stock Exchange (All Intraday) ✖

Alert sound On Off

Daily News

Research

Daily Commodities Update: Cocoa
28 of February, 2012 12:00 GMT

Daily Indices Update: Germany 30 (DE30)
28 of February, 2012 12:00 GMT

Daily Forex Update: EUR/NZD
28 of February, 2012 12:00 GMT

Downloads

- [User Manual](#)
- [MT4 Plugin](#)
- [Performance Statistics](#)

Home | Trader Community

Daily Indices Update: Germany 30 (DE30)

Trader Community

Education

- [Getting Started with Autochartist](#)
- [Chart Patterns](#)
- [Entries](#)
- [Quality Indicators](#)
- [Emerging vs. Complete Patterns](#)
- [Platform Customization](#)
- [Fibonacci](#)
- [PowerStats](#)
- [Key Levels](#)

Research

- [Daily Forex Articles](#)
- [Weekly SCX Articles](#)
- [Анализ Финам](#)
- [STI Update](#)
- [Weekly Forex Articles](#)
- [Daily Indices Articles](#)
- [Weekly Indices Articles](#)
- [Daily Commodities Articles](#)
- [Weekly Commodities Articles](#)
- [Daily FTSE Articles](#)
- [Weekly ASX Articles](#)

Daily Indices Update: Germany 30 (DE30)
28 of February, 2012

By James A. Hyerczyk

A late session rally in the Germany 30 (DE30) stock index CFD helped form the support line of a pennant chart pattern, triggering a breakout through the resistance level. The penetration of this level was weak, but the close near the high suggests a follow-through rally is likely. Increased momentum and better-than-average volume will be needed to drive this market into the Autochartist forecast price zone at 6930.99 to 7044.15.

Home	Chart Patterns	Fibonacci Patterns	Key Levels
<p>Exchange: CFD Symbol: .DE30 Interval: 240 Min Pattern: Pennant Identified Time: 02:27 14:00 Length: 27 Candles Direction: ▲ Trend Change: Continuation Quality: 8 Initial Trend: Continuation Uniformity: 6 Clarity: 7 Breakout: 6930.9903 Forecast Price: 6930.9903</p>			

Price Movement [View Analysis](#)

The overall quality rating of the chart pattern is a solid 8-bars. The initial trend which measures the strength of the market prior to the chart pattern's formation is the maximum 10-bars. Since the breakout was also to the upside, Autochartist has identified the trend change as a continuation. The uniformity indicator looks for equidistant tops and bottoms. Its 6-bar rating suggests that their existence is slightly better than average. The clarity indicator identifies the presence of market noise. Its 7-bar rating indicates that the existence of "market gaps" and "market spikes" is below

Searches
New Search

- .US30 🔍 ✕
- Amsterdam Exchange (All Intraday) 🔍 ✕
- Commodities (End-Of-Day) 🔍 ✕
- FOREX (All Intraday) 🔍 ✕
- New York Stock Exchange (All Intraday) 🔍 ✕

Alert sound On Off

Daily News

Research

Daily Commodities Update:
Cocoa
26 of February, 2012 12:00 GMT

Daily Indices Update:
Germany 30 (DE30)
26 of February, 2012 12:00 GMT

Daily Forex Update: EUR/NZD
26 of February, 2012 12:00 GMT

Downloads

User Manual

Performance Statistics

Autochartist User Manual

Introduction

The Autochartist Interface

Analysis Toolbar (A)
Pattern Display (B)
Search Pane (C)
Results Filter (D)
Results Pane (Active Trading Opportunities)(E)
Results Pane (Expired Trading Opportunities)(F)
View Analysis (PowerStats) (G)
Sound Switch (H)
Daily News Pane (I)
Downloads Pane (J)

Creating and Editing a Search

Basic Search
Search Name
Advanced Search Filters
Advanced Filters: Chart Patterns
Advanced Filters: Fibonacci Patterns
Advanced Filters: Key Levels

Emerging vs Complete Results

Emerging Chart Patterns
Emerging Fibonacci Patterns

Support

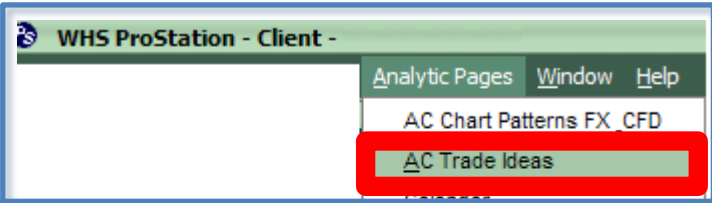
Chapter 2

THE AUTOCHARTIST INTERFACE

When you access Autochartist for the first time, the Autochartist interface will display information that has been loaded by default.

A Analysis Toolbar

- **Home Tab:** contains a combination of results from chart and Fibonacci patterns, as well as Key Levels
- **Chart Patterns Tab:** contains search results for chart patterns
- **Fibonacci Patterns Tab:** contains search results for Fibonacci patterns
- **Key Levels Tab:** contains search results for Key Levels



Trade Ideas

Currency Pairs: Duration:

Probability	Symbol	Chart	Trade Setup	Forecast Pips	Forecast Period	Pattern Detection (GMT)	Hide
■■■■	USD/CHF		SELL @ 0.8949 STOP @ 0.8978 LIMIT @ 0.8934	14	3d 22h 15m	28-Feb-12 16:30	⊗
■■■■■	USD/CHF		SELL @ 0.8949 STOP @ 0.8988 LIMIT @ 0.8929	19	4d 10h 15m	28-Feb-12 16:30	⊗
■■■■■■	AUD/CAD		SELL @ 1.0706 STOP @ 1.0769 LIMIT @ 1.0675	31	5d 14h 0m	28-Feb-12 16:00	⊗
■■■■■■	AUD/CAD		SELL @ 1.0706 STOP @ 1.0767 LIMIT @ 1.0675	30	5d 14h 0m	28-Feb-12 15:30	⊗
■■■■■■	EUR/AUD		SELL @ 1.2475 STOP @ 1.2493 LIMIT @ 1.2466	9	0d 8h 0m	28-Feb-12 15:15	⊗
■■■■■■	CAD/JPY		SELL @ 80.48 STOP @ 81.03 LIMIT @ 80.20	27	1d 0h 0m	28-Feb-12 14:45	⊗
■■■■■■	USD/CHF		BUY @ 0.8972 STOP @ 0.8951 LIMIT @ 0.8983	10	0d 15h 30m	28-Feb-12 14:30	⊗
■■■■■	USD/CAD		BUY @ 0.9965 STOP @ 0.9938 LIMIT @ 0.9979	13	0d 16h 15m	28-Feb-12 13:45	⊗
■■■■■■	GBP/CHF		SELL @ 1.4195 STOP @ 1.4212 LIMIT @ 1.4187	8	3d 14h 30m	28-Feb-12 12:30	⊗
■■■■■■	AUD/CAD		BUY @ 1.0723 STOP @ 1.0670 LIMIT @ 1.0750	26	9d 16h 0m	27-Feb-12 16:00	⊗
■■■■■■	AUD/CAD		BUY @ 1.0723 STOP @ 1.0682 LIMIT @ 1.0744	20	9d 18h 0m	27-Feb-12 16:00	⊗
■■■■■■	AUD/CAD		BUY @ 1.0723 STOP @ 1.0656 LIMIT @ 1.0757	33	7d 13h 30m	27-Feb-12 13:30	⊗
■■■■■■	AUD/CAD		BUY @ 1.0723 STOP @ 1.0692 LIMIT @ 1.0739	15	9d 15h 30m	27-Feb-12 13:30	⊗

The importance of chart patterns in trading is a given. WHS AutoChartist is a tool that scans for emerging and completed chart patterns. It also scans and projects Fibonacci patterns. The tool works in different time frames (15', 30', 60', 240' and day) and can recognize patterns on individual shares, market indices, currencies and commodities.

	<p>The Head and Shoulders chart pattern is a significant trend reversal pattern. The break of the neckline is the signal to go short. The initial stop is placed a bit above the highs of the head. The distance between the head and the neckline can be used as minimum target area.</p>		<p>Symmetrical Triangles indicate that the market has no real trend or direction. The trade is then taken in the direction of the breakout. Ideally this breakout happens at around 1/3 of the pattern. Often the other leg then works as a trendline.</p>
	<p>The inverse Head and Shoulders chart pattern is a significant trend reversal pattern. The break of the neckline is the signal to go long. The initial stop is placed a bit below the lows of the head. The distance between the head and the neckline can be used as minimum target area.</p>		<p>Ascending Triangles are appearing in the consolidation of an upward trend. The pattern is finished with the break of the horizontal resistance line. This is a very good point to use a buy-stop order. Ideally this break happens after 1/3 of the pattern. Often the other leg then works as a trendline.</p>
	<p>Rectangles: There are two trading possibilities:</p> <p>Scenario 1 – Breakout: You enter the trade in the direction of the breakout of the pattern. This can be easily done with an OCO order.</p> <p>Scenario 2 – Range Trading: You are speculating that the price stays within the range. You short at the top and buy at the low of the range. Because of the possibility of scenario 1 always place a tight stop!</p>		<p>Descending Triangles are appearing in the consolidation of a downward trend. The pattern is finished with the break of the horizontal resistance line. This is a very good point to use a sell-stop order. Ideally this break happens after 1/3 of the pattern. Often the other leg then works as resistance.</p>
	<p>Channels also offer two possibilities of trading:</p> <p>Scenario 1 – Breakout: You enter the trade in the direction of the breakout of the pattern. The initial stop is placed below/above the last significant low/high.</p> <p>Scenario 2 – Range Trading: You are speculating that the price stays within the range. You short at the top and buy at the low of the range. Because of the possibility of scenario 1 always place a tight stop (especially when going long)!</p>		<p>Wedge Continuation is similar to a flag or a pennant. It's a small consolidation in a trend. The break in the direction of the trend is then used as entry point. The stop can be placed above the last significant highs.</p>
	<p>Flags are nice trading patterns. You have a small rectangle or channel after a sharp (up or downward) move. The trade is taken into the direction of the trend. The trade is entered with the break of the pattern. The stop should be placed at the low of the pattern. As minimum target the move before the flag can be projected. Because a sharp move is expected after this pattern you can also try to use a trailing stop.</p>		<p>Wedge Reversal indicates a reversal of the trend. The breakout of the pattern is used as entry. The stop can be placed below the last significant lows. Like this you have an excellent risk/reward ratio.</p>
	<p>Pennants are nice trading patterns. You have a small triangle after a sharp (up or downward) move. The trade is taken into the direction of the trend. The stop should be placed at the low/high of the pattern. As minimum target the move before the flag can be projected. Because a sharp move is expected after this pattern you can also try to use a trailing stop.</p>		<p>Double Tops are strong trend reversal patterns. You enter into a short position after the break of the middle low. The stop is then placed a bit above the highs. Thinking of the possibility of a triple top, you should leave a bit of space. This pattern offers a very good risk/reward ratio.</p>
			<p>Double Bottoms are strong trend reversal patterns. You enter into a long position after the break of the last high. The stop is then placed a bit below the lows. Thinking of the possibility of a triple bottom, you should leave a bit of space. This pattern offers a very good risk/reward ratio.</p>
			<p>Triple Tops are strong trend reversal patterns. They appear if after a double top the price is testing the latest highs again. You enter into a short position after the break of the last low. The stop is then placed a bit above the highs. This pattern also offers a very good risk/reward ratio.</p>
			<p>Triple Bottoms are strong trend reversal patterns. They appear if after a double bottom the price is testing the lows again. You enter into a long position after the break of the last high. The stop is then placed a bit below the lows. This pattern also offers a very good risk/reward ratio.</p>

DISCLAIMER: The Autochartist service includes chart pattern identification in respect of foreign currencies, commodities, equities and stocks. There are potential risks relating to investing and trading. You must be aware of such risks and familiarize yourself in regard to such risks and to seek independent advice relating thereto. You should not trade with money that you cannot afford to lose. The Autochartist service and its content should not be construed as a solicitation to invest and/or trade. You should seek independent advice in this regard. Past performance is not indicative of future performance. No representation is being made that any results discussed within the service and its related media content will be achieved. All opinions, news, research, analyses, prices or other information is provided as general market commentary and not as investment advice. Autochartist, MDIO Software, their members, shareholders, employees, agents, representatives and resellers do not warrant the completeness, accuracy or timeliness of the information supplied, and they shall not be liable for any loss or damages, consequential or otherwise, which may arise from the use or reliance of the Autochartist service and its content.